

Monday, June 15, 4:00-6:00 PM



Longfellow House-Washington's
HQ National Historic Site
Portrait of unidentified
Chinese woman, 1873
Charles Appleton Longfellow Papers

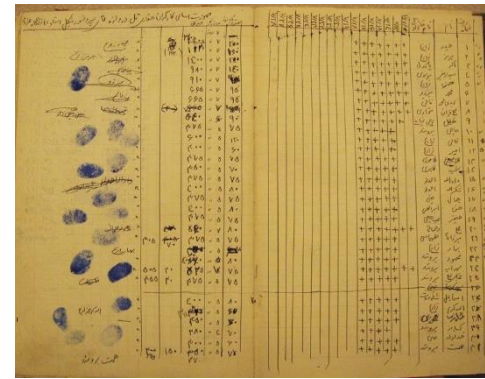
Tuesday, June 16, 3:00-5:00 PM

Peabody Museum of
Archaeology and
Ethnology

Two young Japanese
women in traditional dress
*Photo by Baron Raimund
Stillfried von Rathenitz*
PM#2003.1.2223.314



Schlesinger Library,
Radcliffe Institute
Tintype album, Almy family
and friends, ca. 1900-1905



Harvard Semitic
Museum
Workmen's paybook
*Samaria Excavation
Archives*

7th Annual Cambridge Open Archives NEW ACQUISITIONS & OLD TREASURES

June 15-18, 2015

Event is free, but registration is required!

Sign up at archives@cambridgema.gov.

Send questions there or call Cambridge Historical Commission, 617 349 4683.

Please specify day or days. Details will be sent.

Wednesday, June 17, 6:00-8:00 PM

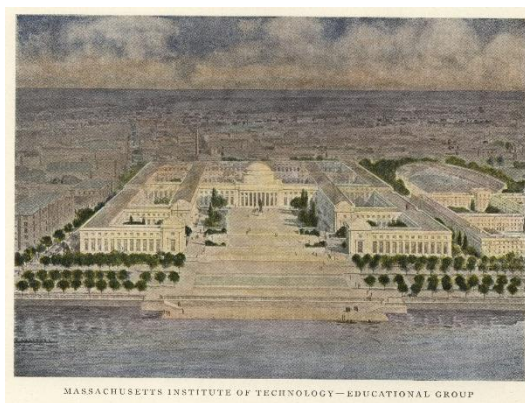


Harvard Art Museums
Exterior of Fogg Museum
from roof of Robinson Hall,
ca. 1942
Fogg History Photos

Cambridge Room, Cambridge Public Library

Thursday, June 18, 3:00-5:00 PM

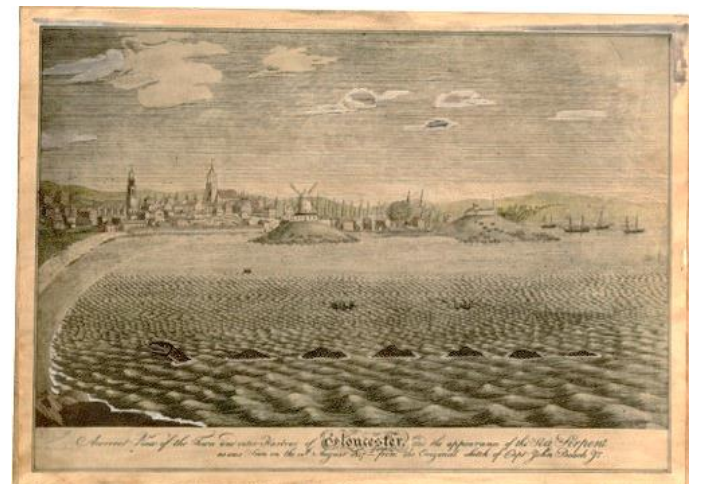
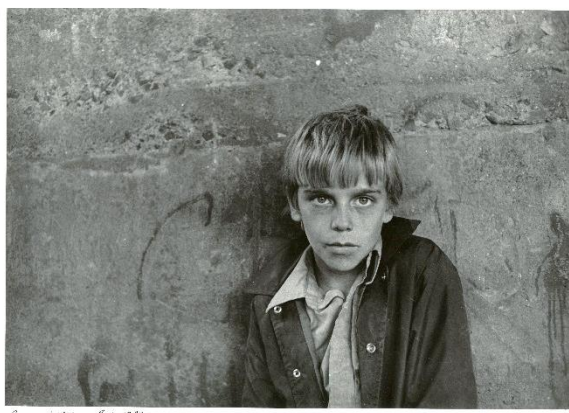
MIT Institute Archives and Special Collections



MIT Education
Group

MIT Museum's Hart Nautical Collection

Rico, Jefferson
Park, 1974
Photo © Olive Pierce



Town and outer harbor of Gloucester and the appearance of the Sea Serpent
... on 14th August 1817—from the original sketch by Captain John Beach Jr.