



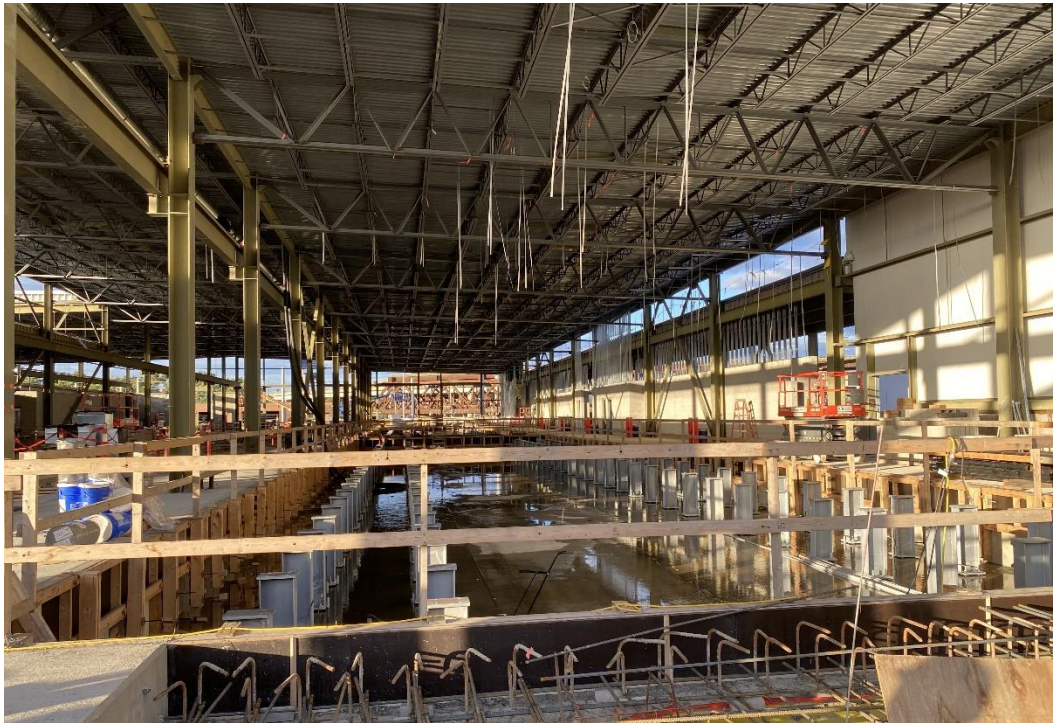
*Photograph 1-View of the new Lechmere Station viaduct and platform under construction (photo courtesy MassDOT)*



*Photograph 2-View of the elevated GLX alignment looking towards Lechmere and Downtown Boston (Zinc Apartments building on the left)*



*Photograph 3-View of the Community Path bridge crossing the GLX alignment heading towards Union Square (Brickbottom Artists Building on the right)*



*Photograph 4-View inside the Vehicle Maintenance Building under construction*